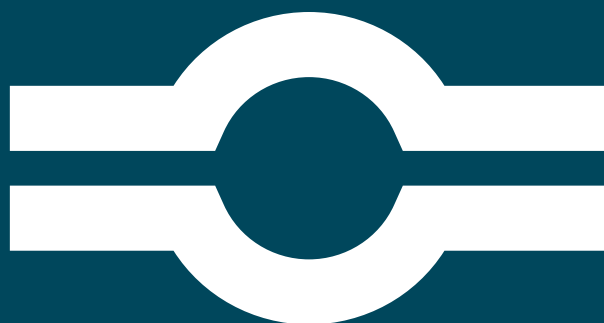


Fascette Metalliche DIN

10

DIN Metal Clamps

Abrazaderas Metálicas DIN



Materiali Materials Materiales

Materiali standard delle fascette

- Acciaio S 235 JR grezzo (M1)
- Acciaio S 235 JR zincato (M3)
- Acciaio Inox AISI 304L (M5)
- Acciaio Inox AISI 316L (M6)

Diversi diametri e materiali disponibili a richiesta.

Metal clamps standard materials

- Steel S 235 JR raw (M1)
- Steel S 235 JR galvanised (M3)
- Stainless Steel AISI 304L (M5)
- Stainless Steel AISI 316L (M6)

Different diameters and materials available on request.

Materiales estándar de la abrazadera metálica

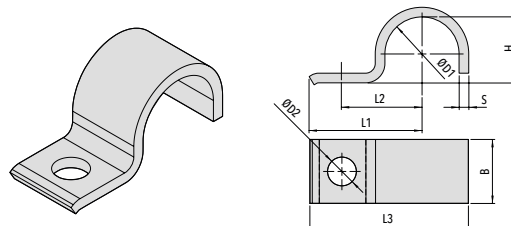
- Acero S 235 JR en bruto (M1)
- Acero S 235 JR galvanizado (M3)
- Acero inoxidable AISI 304L (M5)
- Acero inoxidable AISI 316L (M6)

Diferentes diámetros y materiales disponibles bajo pedido.

DIN 1592 Fascetta pesante

DIN 1592 Heavy saddle

DIN 1592 Abrazadera pesada

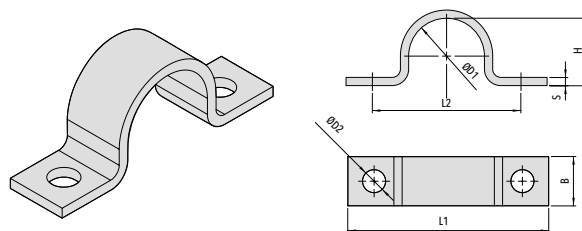


Code	ØD1 range (mm/in)	ØD2 (mm/in)	L1 (mm/in)	L2 (mm/in)	L3 (mm/in)	H (mm/in)	B (mm/in)	S (mm/in)
DIN1592-07-M3	5,5-7 (.22"--.28")	6,6 (.26")	22 (.87")	14 (.55")	27,5 (1.08")	5 (.20")	16 (.63")	2 (.08")
DIN1592-09-M3	7-9 (.28"--.35")	6,6 (.26")	27 (1.06")	18 (.71")	33,5 (1.32")	6 (.24")	20 (.79")	2 (.08")
DIN1592-13-M3	9,5-13 (.39"--.51")	11 (.43")	40 (1.57")	25 (.98")	49,5 (1.95")	9 (.35")	25 (.98")	3 (.12")
DIN1592-15,5-M3	13-15,5 (.51"--.61")	11 (.43")	41 (1.61")	26 (1.02")	52 (2.05")	12 (.47")	25 (.98")	3 (.12")
DIN1592-19-M3	15,5-19 (.61"--.75")	11 (.43")	43 (1.69")	28 (1.10")	55,5 (2.19")	15 (.59")	25 (.98")	3 (.12")
DIN1592-23-M3	20-23 (.79"--.91")	14 (.55")	51 (2.01")	35 (1.38")	67 (2.64")	19 (.75")	30 (1.18")	5 (.20")
DIN1592-26-M3	23-26 (.91"-1.02")	14 (.55")	52 (2.05")	36 (1.42")	70 (2.76")	22 (.87")	30 (1.18")	5 (.20")
DIN1592-28,5-M3	26-28,5 (1.02"-1.12")	14 (.55")	53 (2.09")	37 (1.46")	73 (2.87")	24 (.94")	30 (1.18")	5 (.20")
DIN1592-31-M3	28,5-31 (1.12"-1.22")	14 (.55")	55 (2.17")	39 (1.54")	75,5 (2.97")	27 (1.06")	30 (1.18")	5 (.20")
DIN1592-36-M3	33-36 (1.30"-1.42")	14 (.55")	57 (2.24")	41 (1.61")	81 (3.19")	32 (1.26")	40 (1.57")	5 (.20")
DIN1592-39-M3	36-39 (1.42"-1.54")	14 (.55")	59 (2.32")	43 (1.69")	83,5 (3.29")	34 (1.34")	40 (1.57")	5 (.20")
DIN1592-43-M3	39-43 (1.54"-1.69")	14 (.55")	68 (2.68")	48 (1.89")	94,5 (3.72")	38 (1.50")	40 (1.57")	5 (.20")
DIN1592-46-M3	43-46 (1.69"-1.81")	18 (.71")	70 (2.76")	50 (1.97")	98 (3.86")	41 (1.61")	40 (1.57")	5 (.20")
DIN1592-49-M3	46-49 (1.81"-1.93")	18 (.71")	73 (2.87")	53 (2.09")	105,5 (4.15")	44 (1.73")	40 (1.57")	8 (.31")
DIN1592-52-M3	49-52 (1.93"-2.05")	18 (.71")	76 (2.99")	56 (2.20")	110 (4.33")	47 (1.85")	40 (1.57")	8 (.31")
DIN1592-58-M3	53-58 (2.09"-2.28")	18 (.71")	76 (2.99")	58 (2.28")	115 (4.53")	52 (2.05")	40 (1.57")	8 (.31")
DIN1592-61-M3	58-61 (2.28"-2.40")	18 (.71")	80 (3.15")	60 (2.36")	118,5 (4.67")	57 (2.24")	40 (1.57")	8 (.31")

DIN 1593 Fascetta pesante

DIN 1593 Heavy saddle

DIN 1593 Abrazadera pesada

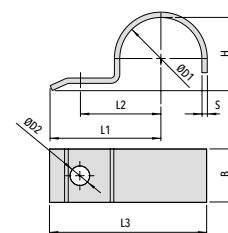
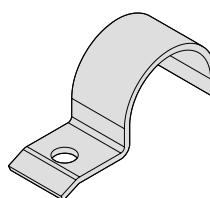


Code	ØD1 range (mm/in)	ØD2 (mm/in)	L1 (mm/in)	L2 (mm/in)	H (mm/in)	B (mm/in)	S (mm/in)
DIN1593-07-M3	5,5-7 (.22"- .28")	6,6 (.26")	44 (1.73")	28 (1.10")	5 (.20")	16 (.63")	2 (.08")
DIN1593-09-M3	7-9 (.28"- .35")	6,6 (.26")	48 (1.89")	32 (1.26")	6 (.24")	20 (.79")	2 (.08")
DIN1593-13-M3	9,5-13 (.39"- .51")	6,6 (.26")	52 (2.05")	36 (1.42")	9 (.35")	20 (.79")	2 (.08")
DIN1593-15,5-M3	13-15,5 (.51"- .61")	6,6 (.26")	56 (2.20")	40 (1.57")	12 (.47")	20 (.79")	2 (.08")
DIN1593-19-M3	15,5-19 (.61"- .75")	6,6 (.26")	60 (2.36")	44 (1.73")	15 (.59")	20 (.79")	2 (.08")
DIN1593-23-M3	20-23 (.79"- .91")	11 (.43")	82 (3.23")	56 (2.20")	19 (.75")	25 (.98")	3 (.12")
DIN1593-26-M3	23-26 (.91"- 1.02")	11 (.43")	84 (3.31")	58 (2.28")	22 (.87")	25 (.98")	3 (.12")
DIN1593-28,5-M3	26-28,5 (1.02"- 1.12")	11 (.43")	90 (3.54")	64 (2.52")	24 (.94")	25 (.98")	3 (.12")
DIN1593-31-M3	28,5-31 (1.12"- 1.22")	11 (.43")	90 (3.54")	64 (2.52")	27 (1.06")	25 (.98")	3 (.12")
DIN1593-36-M3	33-36 (1.30"- 1.42")	11 (.43")	106 (4.17")	80 (3.15")	32 (1.26")	30 (1.18")	5 (.20")
DIN1593-39-M3	36-39 (1.42"- 1.54")	11 (.43")	110 (4.33")	84 (3.31")	34 (1.34")	30 (1.18")	5 (.20")
DIN1593-43-M3	39-43 (1.54"- 1.69")	14 (.55")	120 (4.72")	88 (3.46")	38 (1.50")	30 (1.18")	5 (.20")
DIN1593-46-M3	43-46 (1.69"- 1.81")	14 (.55")	122 (4.80")	90 (3.54")	41 (1.61")	30 (1.18")	5 (.20")
DIN1593-49-M3	46-49 (1.81"- 1.93")	14 (.55")	122 (4.80")	90 (3.54")	44 (1.73")	30 (1.18")	5 (.20")
DIN1593-58-M3	53-58 (2.09"- 2.28")	14 (.55")	142 (5.59")	110 (4.33")	52 (2.05")	40 (1.57")	5 (.20")
DIN1593-61-M3	58-61 (2.28"- 2.40")	14 (.55")	142 (5.59")	110 (4.33")	57 (2.24")	40 (1.57")	5 (.20")
DIN1593-71-M3	57-71 (2.64"- 2.80")	14 (.55")	152 (5.98")	120 (4.72")	66 (2.60")	40 (1.57")	5 (.20")
DIN1593-77-M3	73-77 (2.87"- 3.03")	14 (.55")	176 (6.93")	136 (5.35")	72 (2.83")	40 (1.57")	5 (.20")
DIN1593-81-M3	77-81 (3.03"- 3.19")	18 (.71")	184 (7.24")	144 (5.67")	76 (2.99")	40 (1.57")	5 (.20")
DIN1593-91-M3	86-91 (3.39"- 3.58")	18 (.71")	198 (7.80")	158 (6.22")	85 (3.35")	40 (1.57")	8 (.31")
DIN1593-103-M3	99-103 (3.90"- 4.06")	18 (.71")	214 (8.43")	174 (6.85")	98 (3.86")	40 (1.57")	8 (.31")
DIN1593-109-M3	105-109 (4.13"- 4.29")	18 (.71")	220 (8.66")	180 (7.09")	104 (4.09")	40 (1.57")	8 (.31")
DIN1593-115-M3	110-115 (4.33"- 4.53")	18 (.71")	226 (8.90")	186 (7.32")	109 (4.29")	40 (1.57")	8 (.31")

DIN 1596 Fascetta leggera

DIN 1596 Light saddle

DIN 1596 Abrazadera ligera

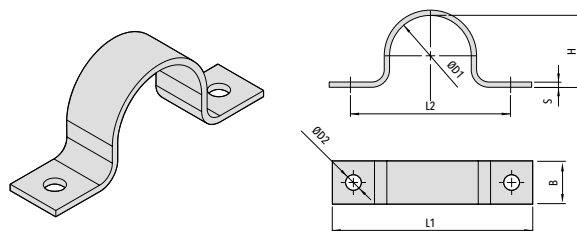


Code	ØD1 range (mm/in)	ØD2 (mm/in)	L1 (mm/in)	L2 (mm/in)	L3 (mm/in)	H (mm/in)	B (mm/in)	S (mm/in)
DIN1596-07-M3	5,5-7 (.22"- .28")	6,6 (.26")	26 (1.02")	14 (.55")	31,5 (1.24")	5 (.20")	16 (.63")	2 (.08")
DIN1596-09-M3	7-9 (.28"- .35")	6,6 (.26")	28 (1.10")	16 (.63")	34,5 (1.36")	6 (.24")	16 (.63")	2 (.08")
DIN1596-13-M3	9,5-13 (.39"- .51")	6,6 (.26")	30 (1.18")	18 (.71")	38,5 (1.52")	9 (.35")	20 (.79")	2 (.08")
DIN1596-15,5-M3	13-15,5 (.51"- .61")	6,6 (.26")	32 (1.26")	20 (.79")	41,75 (1.64")	12 (.47")	20 (.79")	2 (.08")
DIN1596-19-M3	15,5-19 (.61"- .75")	6,6 (.26")	34 (1.34")	22 (.87")	45,5 (1.79")	15 (.59")	20 (.79")	2 (.08")
DIN1596-23-M3	20-23 (.79"- .91")	9 (.35")	43 (1.69")	28 (1.10")	57,5 (2.26")	19 (.75")	25 (.98")	3 (.12")
DIN1596-26-M3	23-26 (.91"- 1.02")	9 (.35")	44 (1.73")	29 (1.14")	60 (2.36")	22 (.87")	25 (.98")	3 (.12")
DIN1596-28,5-M3	26-28,5 (1.02"- 1.12")	9 (.35")	47 (1.85")	32 (1.26")	64,25 (2.53")	24 (.94")	25 (.98")	3 (.12")
DIN1596-31-M3	28,5-31 (1.12"- 1.22")	9 (.35")	47 (1.85")	32 (1.26")	65,5 (2.58")	27 (1.06")	25 (.98")	3 (.12")
DIN1596-33-M3	31-33 (1.22"- 1.30")	9 (.35")	56 (2.20")	36 (1.42")	75,5 (2.97")	29 (1.14")	25 (.98")	3 (.12")
DIN1596-36-M3	33-36 (1.30"- 1.42")	11 (.43")	57 (2.24")	40 (1.57")	78 (3.07")	32 (1.26")	30 (1.18")	3 (.12")
DIN1596-39-M3	36-39 (1.42"- 1.54")	11 (.43")	59 (2.32")	42 (1.65")	81,5 (3.21")	34 (1.34")	30 (1.18")	3 (.12")
DIN1596-43-M3	39-43 (1.54"- 1.69")	11 (.43")	61 (2.40")	44 (1.73")	85,5 (3.37")	38 (1.50")	30 (1.18")	3 (.12")
DIN1596-46-M3	43-46 (1.69"- 1.81")	11 (.43")	62 (2.44")	45 (1.77")	88 (3.46")	41 (1.61")	30 (1.18")	3 (.12")
DIN1596-49-M3	46-49 (1.81"- 1.93")	14 (.55")	67 (2.64")	48 (1.89")	95,5 (3.76")	44 (1.73")	40 (1.57")	4 (.16")
DIN1596-52-M3	49-52 (1.93"- 2.05")	14 (.55")	72 (2.83")	53 (2.09")	102 (4.02")	47 (1.85")	40 (1.57")	4 (.16")
DIN1596-58-M3	53-58 (2.09"- 2.28")	14 (.55")	74 (2.99")	55 (2.17")	107 (4.21")	52 (2.05")	40 (1.57")	4 (.16")
DIN1596-61-M3	58-61 (2.28"- 2.40")	14 (.55")	77 (3.03")	58 (2.28")	111,5 (4.39")	56 (2.20")	40 (1.57")	4 (.16")

DIN 1597 Fascetta leggera

DIN 1597 Light saddle

DIN 1597 Abrazadera ligera



Code	ØD1 range (mm/in)	ØD2 (mm/in)	L1 (mm/in)	L2 (mm/in)	H (mm/in)	B (mm/in)	S (mm/in)
DIN1597-07-M3	5,5-7 (.22"- .28")	5,5 (.22")	44 (1.73")	28 (1.10")	5 (.20")	16 (.63")	1,5 (.06")
DIN1597-09-M3	7-9 (.28"- .35")	5,5 (.22")	48 (1.89")	32 (1.26")	6 (.24")	16 (.63")	1,5 (.06")
DIN1597-13-M3	9,5-13 (.39"- .51")	5,5 (.22")	52 (2.05")	36 (1.42")	9 (.35")	16 (.63")	1,5 (.06")
DIN1597-15,5-M3	13-15,5 (.51"- .61")	5,5 (.22")	56 (2.20")	40 (1.57")	12 (.47")	16 (.63")	1,5 (.06")
DIN1597-19-M3	15,5-19 (.61"- .75")	5,5 (.22")	60 (2.36")	44 (1.73")	15 (.59")	16 (.63")	1,5 (.06")
DIN1597-23-M3	20-23 (.79"- .91")	6,6 (.26")	76 (2.99")	56 (2.20")	19 (.75")	20 (.79")	2 (.08")
DIN1597-26-M3	23-26 (.91"- 1.02")	6,6 (.26")	78 (3.07")	58 (2.28")	22 (.87")	20 (.79")	2 (.08")
DIN1597-28,5-M3	26-28,5 (1.02"- 1.12")	6,6 (.26")	84 (3.31")	64 (2.52")	24 (.94")	20 (.79")	2 (.08")
DIN1597-31-M3	28,5-31 (1.12"- 1.22")	6,6 (.26")	84 (3.31")	64 (2.52")	27 (1.06")	20 (.79")	2 (.08")
DIN1597-33-M3	31-33 (1.22"- 1.30")	6,6 (.26")	92 (3.62")	72 (3.15")	29 (1.14")	20 (.79")	2 (.08")
DIN1597-36-M3	33-36 (1.30"- 1.42")	9 (.35")	104 (4.09")	80 (3.15")	32 (1.26")	25 (.98")	3 (.12")
DIN1597-39-M3	36-39 (1.42"- 1.54")	9 (.35")	108 (4.25")	84 (3.31")	34 (1.34")	25 (.98")	3 (.12")
DIN1597-43-M3	39-43 (1.54"- 1.69")	9 (.35")	112 (4.41")	88 (3.46")	38 (1.50")	25 (.98")	3 (.12")
DIN1597-46-M3	43-46 (1.69"- 1.81")	9 (.35")	114 (4.49")	90 (3.54")	41 (1.61")	25 (.98")	3 (.12")
DIN1597-49-M3	46-49 (1.81"- 1.93")	11 (.43")	118 (4.65")	90 (3.54")	44 (1.73")	30 (1.18")	3 (.12")
DIN1597-52-M3	49-52 (1.93"- 2.05")	11 (.43")	134 (5.28")	106 (4.17")	47 (1.85")	30 (1.18")	3 (.12")
DIN1597-58-M3	53-58 (2.09"- 2.28")	11 (.43")	138 (5.43")	110 (4.33")	52 (2.05")	30 (1.18")	3 (.12")
DIN1597-61-M3	58-61 (2.28"- 2.40")	11 (.43")	138 (5.43")	110 (4.33")	56 (2.20")	30 (1.18")	3 (.12")



DIN 3567-A Fascetta

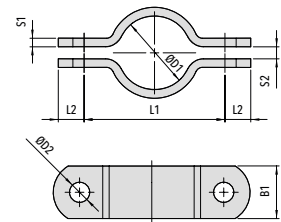
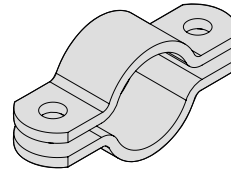
DIN 3567-A Metal pipe clamp

DIN 3567-A Abrazadera

Coppia di semicollari

Two clamps halves

Parejas de medias abrazaderas



Code	Outside diameter ØD1		L1 (mm/in)	L2 (mm/in)	S1 (mm/in)	S2 (mm/in)	ØD2 (mm/in)	B1 (mm/in)	Bolt + Nut
	(mm)	(in)							
DIN3567A-020-M3	15	1/2"	57 (2.24")	15 (.59")	5 (.20")	7 (.28")	11,5 (.45")	30 (1.18")	M10x30 (3/8-16 UNCx1.1/4") M10 (3/8-16 UNC)
DIN3567A-022-M3	15	1/2"	59 (2.32")	15 (.59")	5 (.20")	7 (.28")	11,5 (.45")	30 (1.18")	
DIN3567A-025-M3	20	3/4"	62 (2.44")	15 (.59")	5 (.20")	7 (.28")	11,5 (.45")	30 (1.18")	
DIN3567A-027-M3	20	3/4"	66 (2.60")	15 (.59")	5 (.20")	7 (.28")	11,5 (.45")	30 (1.18")	
DIN3567A-030-M3	25	1"	68 (2.68")	15 (.59")	5 (.20")	7 (.28")	11,5 (.45")	30 (1.18")	
DIN3567A-034-M3	25	1"	72 (2.83")	15 (.59")	5 (.20")	7 (.28")	11,5 (.45")	30 (1.18")	
DIN3567A-038-M3	32	1.1/4"	76 (2.99")	15 (.59")	5 (.20")	7 (.28")	11,5 (.45")	30 (1.18")	
DIN3567A-043-M3	32	1.1/4"	82 (3.23")	15 (.59")	5 (.20")	7 (.28")	11,5 (.45")	30 (1.18")	
DIN3567A-045-M3	40	1.1/2"	84 (3.31")	15 (.59")	5 (.20")	7 (.28")	11,5 (.45")	30 (1.18")	
DIN3567A-049-M3	40	1.1/2"	88 (3.46")	15 (.59")	5 (.20")	7 (.28")	11,5 (.45")	30 (1.18")	
DIN3567A-057-M3	50	2"	104 (4.09")	18 (.71")	6 (.24")	9 (.35")	14 (.35")	40 (1.57")	M12x35 (7/16-14 UNCx1.3/8") M12 (7/16-14 UNC)
DIN3567A-061-M3	50	2"	108 (4.25")	18 (.71")	6 (.24")	9 (.35")	14 (.35")	40 (1.57")	
DIN3567A-077-M3	65	2.1/2"	122 (4.80")	18 (.71")	6 (.24")	9 (.35")	14 (.35")	40 (1.57")	
DIN3567A-089-M3	80	3"	136 (5.35")	18 (.71")	6 (.24")	9 (.35")	14 (.35")	40 (1.57")	
DIN3567A-108-M3	100	4"	172 (6.77")	24 (.94")	8 (.31")	11 (.43")	18 (.71")	50 (1.97")	M16x45 (5/8-11 UNCx1.3/4") M16 (5/8-11 UNC)
DIN3567A-115-M3	100	4"	178 (7.01")	24 (.94")	8 (.31")	11 (.43")	18 (.71")	50 (1.97")	
DIN3567A-133-M3	125	5"	196 (7.72")	24 (.94")	8 (.31")	11 (.43")	18 (.71")	50 (1.97")	
DIN3567A-140-M3	125	5"	204 (8.03")	24 (.94")	8 (.31")	11 (.43")	18 (.71")	50 (1.97")	
DIN3567A-159-M3	150	6"	222 (8.74")	24 (.94")	8 (.31")	11 (.43")	18 (.71")	50 (1.97")	
DIN3567A-169-M3	150	6"	232 (9.13")	24 (.94")	8 (.31")	11 (.43")	18 (.71")	50 (1.97")	
DIN3567A-194-M3	175	7"	258 (10.16")	24 (.94")	8 (.31")	11 (.43")	18 (.71")	50 (1.97")	
DIN3567A-216-M3	200	8"	280 (11.02")	24 (.94")	8 (.31")	11 (.43")	18 (.71")	50 (1.97")	
DIN3567A-220-M3	200	8"	284 (11.18")	24 (.94")	8 (.31")	11 (.43")	18 (.71")	50 (1.97")	

Code	Outside diameter ØD1		L1 (mm/in)	L2 (mm/in)	S1 (mm/in)	S2 (mm/in)	ØD2 (mm/in)	B1 (mm/in)	Bolt + Nut
	(mm)	(in)							
DIN3567A-267-M3	250	10"	342 (13.46")	30 (1.18")	8 (.31")	14 (.55")	23 (.91")	60 (2.36")	M20x50 (3/4-10 UNCx2") M20 (3/4-10 UNC)
DIN3567A-273-M3	250	10"	348 (13.70")	30 (1.18")	8 (.31")	14 (.55")	23 (.91")	60 (2.36")	
DIN3567A-318-M3	300	12"	392 (15.43")	30 (1.18")	8 (.31")	14 (.55")	23 (.91")	60 (2.36")	
DIN3567A-324-M3	300	12"	398 (15.67")	30 (1.18")	8 (.31")	14 (.55")	23 (.91")	60 (2.36")	
DIN3567A-356-M3	350	14"	432 (17")	30 (1.18")	8 (.31")	14 (.55")	23 (.91")	60 (2.36")	
DIN3567A-368-M3	350	14"	444 (17.48")	30 (1.18")	8 (.31")	14 (.55")	23 (.91")	60 (2.36")	
DIN3567A-407-M3	400	16"	498 (19.61")	36 (1.42")	10 (.39")	18 (.71")	27 (1.06")	70 (2.76")	M24x60 (7/8-9 UNCx2.3/8") M24 (7/8-9 UNC)
DIN3567A-419-M3	400	16"	510 (20.08")	36 (1.42")	10 (.39")	18 (.71")	27 (1.06")	70 (2.76")	
DIN3567A-458-M3	450	18"	550 (21.65")	36 (1.42")	10 (.39")	18 (.71")	27 (1.06")	70 (2.76")	
DIN3567A-508-M3	500	20"	600 (23.62")	36 (1.42")	10 (.39")	18 (.71")	27 (1.06")	70 (2.76")	
DIN3567A-521-M3	500	20"	614 (24.17")	36 (1.42")	10 (.39")	18 (.71")	27 (1.06")	70 (2.76")	



DIN 3567-B Fascetta

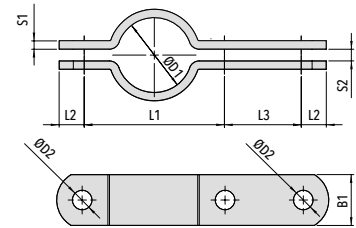
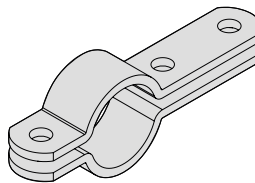
DIN 3567-B Metal pipe clamp

DIN 3567-B Abrazadera

Coppia di semicollari

Two clamps halves

Parejas de medias abrazaderas



Code	Outside diameter ØD1		L1 (mm/in)	L2 (mm/in)	L3 (mm/in)	S1 (mm/in)	S2 (mm/in)	ØD2 (mm/in)	B1 (mm/in)	Bolt + Nut
	(mm)	(in)								
DIN3567B-020-M3	15	1/2"	57 (2.24")	15 (.59")	46 (1.81")	5 (.20")	7 (.28")	11,5 (.45")	30 (1.18")	M10x30 (3/8-16 UNCx1.1/4") M10 (3/8-16 UNC)
DIN3567B-022-M3	15	1/2"	59 (2.32")	15 (.59")	46 (1.81")	5 (.20")	7 (.28")	11,5 (.45")	30 (1.18")	
DIN3567B-025-M3	20	3/4"	62 (2.44")	15 (.59")	46 (1.81")	5 (.20")	7 (.28")	11,5 (.45")	30 (1.18")	
DIN3567B-027-M3	20	3/4"	66 (2.60")	15 (.59")	46 (1.81")	5 (.20")	7 (.28")	11,5 (.45")	30 (1.18")	
DIN3567B-030-M3	25	1"	68 (2.68")	15 (.59")	46 (1.81")	5 (.20")	7 (.28")	11,5 (.45")	30 (1.18")	
DIN3567B-034-M3	25	1"	72 (2.83")	15 (.59")	46 (1.81")	5 (.20")	7 (.28")	11,5 (.45")	30 (1.18")	
DIN3567B-038-M3	32	1.1/4"	76 (2.99")	15 (.59")	46 (1.81")	5 (.20")	7 (.28")	11,5 (.45")	30 (1.18")	
DIN3567B-043-M3	32	1.1/4"	82 (3.23")	15 (.59")	46 (1.81")	5 (.20")	7 (.28")	11,5 (.45")	30 (1.18")	
DIN3567B-045-M3	40	1.1/2"	84 (3.31")	15 (.59")	46 (1.81")	5 (.20")	7 (.28")	11,5 (.45")	30 (1.18")	
DIN3567B-049-M3	40	1.1/2"	88 (3.46")	15 (.59")	46 (1.81")	5 (.20")	7 (.28")	11,5 (.45")	30 (1.18")	
DIN3567B-057-M3	50	2"	104 (4.09")	18 (.71")	54 (2.13")	6 (.24")	9 (.35")	14 (.35")	40 (1.57")	M12x35 (7/16-14 UNCx1.3/8") M12 (7/16-14 UNC)
DIN3567B-061-M3	50	2"	108 (4.25")	18 (.71")	54 (2.13")	6 (.24")	9 (.35")	14 (.35")	40 (1.57")	
DIN3567B-077-M3	65	2.1/2"	122 (4.80")	18 (.71")	54 (2.13")	6 (.24")	9 (.35")	14 (.35")	40 (1.57")	
DIN3567B-089-M3	80	3"	136 (5.35")	18 (.71")	54 (2.13")	6 (.24")	9 (.35")	14 (.35")	40 (1.57")	
DIN3567B-108-M3	100	4"	172 (6.77")	24 (.94")	70 (2.76")	8 (.31")	11 (.43")	18 (.71")	50 (1.97")	M16x45 (5/8-11 UNCx1.3/4") M16 (5/8-11 UNC)
DIN3567B-115-M3	100	4"	178 (7.01")	24 (.94")	70 (2.76")	8 (.31")	11 (.43")	18 (.71")	50 (1.97")	
DIN3567B-133-M3	125	5"	196 (7.72")	24 (.94")	70 (2.76")	8 (.31")	11 (.43")	18 (.71")	50 (1.97")	
DIN3567B-140-M3	125	5"	204 (8.03")	24 (.94")	70 (2.76")	8 (.31")	11 (.43")	18 (.71")	50 (1.97")	
DIN3567B-159-M3	150	6"	222 (8.74")	24 (.94")	70 (2.76")	8 (.31")	11 (.43")	18 (.71")	50 (1.97")	
DIN3567B-169-M3	150	6"	232 (9.13")	24 (.94")	70 (2.76")	8 (.31")	11 (.43")	18 (.71")	50 (1.97")	
DIN3567B-194-M3	175	7"	258 (10.16")	24 (.94")	70 (2.76")	8 (.31")	11 (.43")	18 (.71")	50 (1.97")	
DIN3567B-216-M3	200	8"	280 (11.02")	24 (.94")	70 (2.76")	8 (.31")	11 (.43")	18 (.71")	50 (1.97")	
DIN3567B-220-M3	200	8"	284 (11.18")	24 (.94")	70 (2.76")	8 (.31")	11 (.43")	18 (.71")	50 (1.97")	

Code	Outside diameter ØD1		L1 (mm/in)	L2 (mm/in)	L3 (mm/in)	S1 (mm/in)	S2 (mm/in)	ØD2 (mm/in)	B1 (mm/in)	Bolt + Nut
	(mm)	(in)								
DIN3567B-267-M3	250	10"	342 (13.46")	30 (1.18")	86 (3.39")	8 (.31")	14 (.55")	23 (.91")	60 (2.36")	M20x50 (3/4-10 UNCx2") M20 (3/4-10 UNC)
DIN3567B-273-M3	250	10"	348 (13.70")	30 (1.18")	86 (3.39")	8 (.31")	14 (.55")	23 (.91")	60 (2.36")	
DIN3567B-318-M3	300	12"	392 (15.43")	30 (1.18")	86 (3.39")	8 (.31")	14 (.55")	23 (.91")	60 (2.36")	
DIN3567B-324-M3	300	12"	398 (15.67")	30 (1.18")	86 (3.39")	8 (.31")	14 (.55")	23 (.91")	60 (2.36")	
DIN3567B-356-M3	350	14"	432 (17")	30 (1.18")	86 (3.39")	8 (.31")	14 (.55")	23 (.91")	60 (2.36")	
DIN3567B-368-M3	350	14"	444 (17.48")	30 (1.18")	86 (3.39")	8 (.31")	14 (.55")	23 (.91")	60 (2.36")	
DIN3567B-407-M3	400	16"	498 (19.61")	36 (1.42")	104 (4.09")	10 (.39")	18 (.71")	27 (1.06")	70 (2.76")	M24x60 (7/8-9 UNCx2.3/8") M24 (7/8-9 UNC)
DIN3567B-419-M3	400	16"	510 (10.08")	36 (1.42")	104 (4.09")	10 (.39")	18 (.71")	27 (1.06")	70 (2.76")	
DIN3567B-458-M3	450	18"	550 (21.65")	36 (1.42")	104 (4.09")	10 (.39")	18 (.71")	27 (1.06")	70 (2.76")	
DIN3567B-508-M3	500	20"	600 (23.62")	36 (1.42")	104 (4.09")	10 (.39")	18 (.71")	27 (1.06")	70 (2.76")	
DIN3567B-521-M3	500	20"	614 (24.17")	36 (1.42")	104 (4.09")	10 (.39")	18 (.71")	27 (1.06")	70 (2.76")	

